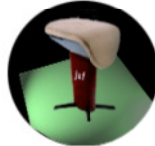




## Grand Prix Osijek 2018. DOBRO World Cup Qualifications

women



### vault wag

Rank	Gymnast	BiB	NOC	D score	E score	Pen	Score	Try	Q
1	CHUSOVITINA Oksana	35	UZB				<b>14,184</b>		Q
	CHUSOVITINA Oksana		UZB	5,400	8,867		<b>14,267</b>	1	
	CHUSOVITINA Oksana		UZB	5,200	9,000	0,100	<b>14,100</b>	2	
2	TRYKINA Victoria	28	RUS				<b>14,067</b>		Q
	TRYKINA Victoria		RUS	5,400	8,867	0,100	<b>14,167</b>	1	
	TRYKINA Victoria		RUS	5,200	8,767		<b>13,967</b>	2	
3	KYSSELEF Tjasa	7	SLO				<b>13,717</b>		Q
	KYSSELEF Tjasa		SLO	4,800	8,933		<b>13,733</b>	1	
	KYSSELEF Tjasa		SLO	5,000	8,700		<b>13,700</b>	2	
4	PENA ABREU Yamilet	18	DOM				<b>13,600</b>		Q
	PENA ABREU Yamilet		DOM	5,400	8,333	0,300	<b>13,433</b>	1	
	PENA ABREU Yamilet		DOM	5,000	8,767		<b>13,767</b>	2	
5	TAMAN Nancy	19	EGY				<b>13,417</b>		Q
	TAMAN Nancy		EGY	5,400	8,500	0,100	<b>13,800</b>	1	
	TAMAN Nancy		EGY	4,600	8,433		<b>13,033</b>	2	
6	TKALCEC Tijana	1	CRO				<b>13,383</b>		Q
	TKALCEC Tijana		CRO	4,600	8,833		<b>13,433</b>	1	
	TKALCEC Tijana		CRO	4,600	8,833	0,100	<b>13,333</b>	2	
7	INSHINA Yuliya	14	AZE				<b>13,350</b>		Q
	INSHINA Yuliya		AZE	4,600	8,633		<b>13,233</b>	1	
	INSHINA Yuliya		AZE	4,600	8,867		<b>13,467</b>	2	
8	RADIVILOVA Angelina	34	UKR				<b>13,234</b>		Q
	RADIVILOVA Angelina		UKR	4,600	8,700		<b>13,300</b>	1	
	RADIVILOVA Angelina		UKR	4,200	8,967		<b>13,167</b>	2	
9	KAJIC Ema	2	CRO				<b>12,934</b>		R
	KAJIC Ema		CRO	4,600	8,500		<b>13,100</b>	1	
	KAJIC Ema		CRO	4,400	8,367		<b>12,767</b>	2	
10	ZUBOVA Varvara	29	RUS				<b>12,884</b>		R
	ZUBOVA Varvara		RUS	4,600	8,300		<b>12,900</b>	1	
	ZUBOVA Varvara		RUS	4,400	8,467		<b>12,867</b>	2	
11	STAMENKOVIC Jelena	10	SRB				<b>12,850</b>		R
	STAMENKOVIC Jelena		SRB	4,200	8,700		<b>12,900</b>	1	
	STAMENKOVIC Jelena		SRB	4,200	8,700	0,100	<b>12,800</b>	2	
12	NETZER Ofir	5	ISR				<b>12,800</b>		
	NETZER Ofir		ISR	4,800	7,733	0,300	<b>12,233</b>	1	
	NETZER Ofir		ISR	4,800	8,667	0,100	<b>13,367</b>	2	



---

<b>13</b>	<b>WILDI Anina</b>	<b>32</b>	<b>SUI</b>				<b>12,533</b>	
	WILDI Anina		SUI	4,600	8,633	0,100	<b>13,133</b>	1
	WILDI Anina		SUI	3,500	8,433		<b>11,933</b>	2

---